

# Tribal Exhibitions Walk Through

Idaho State Museum

July 2017



[www.history.idaho.gov](http://www.history.idaho.gov)



(208) 334-2682



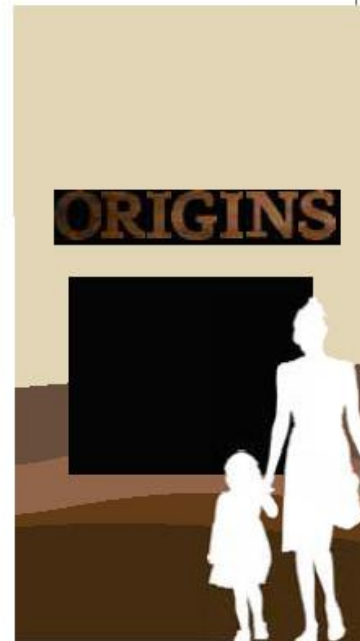
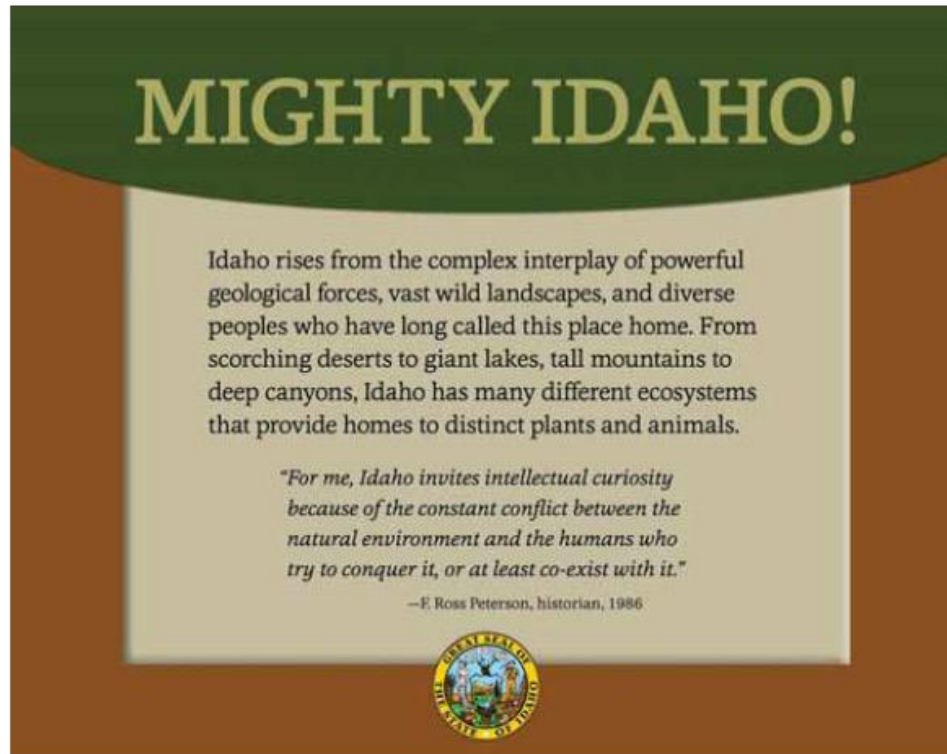
# Idaho State Historical Museum

## ORIGINS

EXHIBITION GRAPHICS  
100% DESIGN DEVELOPMENT



LISA MCGUIRE  
COMMUNICATION & DESIGN  
303-981-1796



#### A.101 SPECIFICATIONS

HPL Panel: iZone

2 layers sandwiched:  
1/4" thick base panel with type  
1/4" frame panel, routed

Final Size: 48" w X 38" h X 1/2" d

Recessed in wall, see page XX of Exhibit  
Design package for detail.

Word count: 60-75

TITLE TO BE DETERMINED

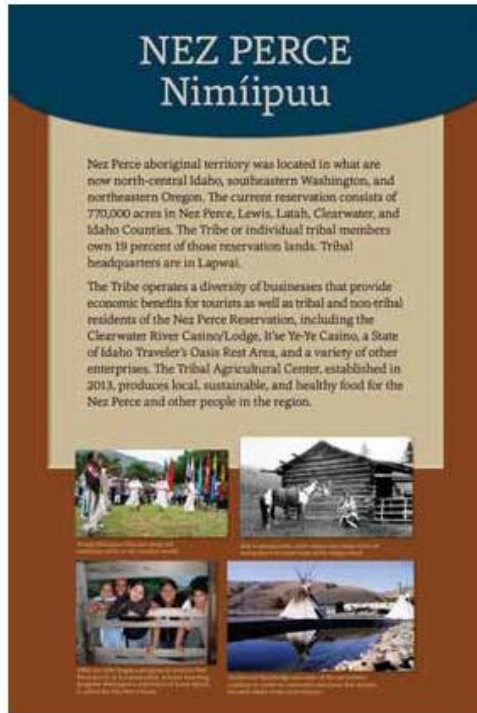
Dimensional letters  
see page 46

[ 6 ]





C.101 | Five Tribes: Nez Perce



C.101 SPECIFICATIONS

HPL Panel: iZone

2 layers sandwiched:  
 1/4" thick base panel with type  
 1/4" frame panel, routed

Final Size: 24" w X 36" h X 1/2" d

ICE finish

Recessed in wall, see page XX of Exhibit  
 Design package for detail.

Word count: 75-100  
 and short captions

[ 9 ]

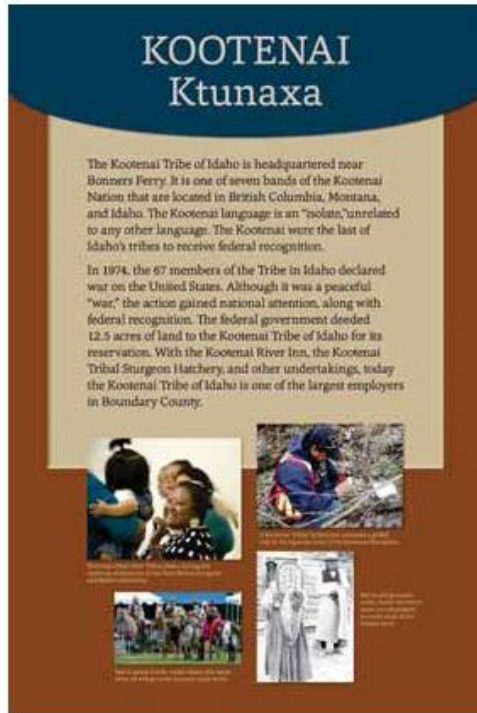
TYPE STANDARDS

Headline: Capita Regular, 160/150, caps

Narrative: Cassia Regular, 46/60

Captions: Cassia Regular, 23/26

C.102 | Five Tribes: Kootenai



C.102 SPECIFICATIONS

HPL Panel: iZone

2 layers sandwiched:  
1/4" thick base panel with type  
1/4" frame panel, routed

1/8" photo panels applied on top

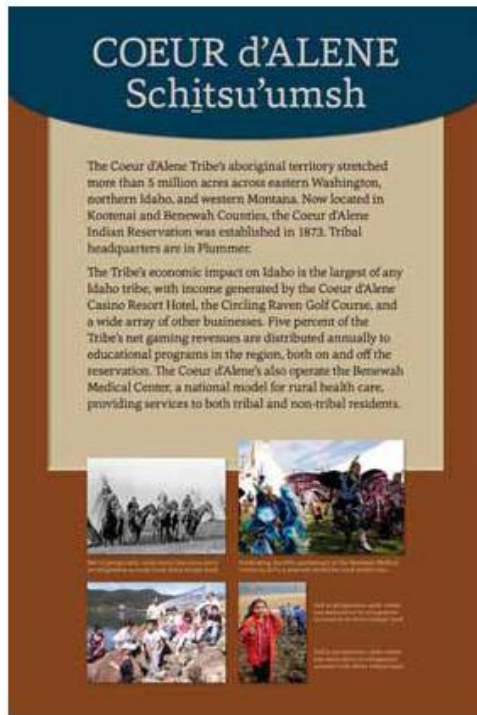
Final Size: 24" w X 36" h X 1/2" d

ICE finish

Recessed in wall, see page XX of Exhibit  
Design package for detail.

Word count: 75-100  
and short captions

C.103 | Five Tribes: Coeur D'Alene



C.103 SPECIFICATIONS

HPL Panel: iZone

2 layers sandwiched:  
1/4" thick base panel with type  
1/4" frame panel, routed

1/8" photo panels applied on top

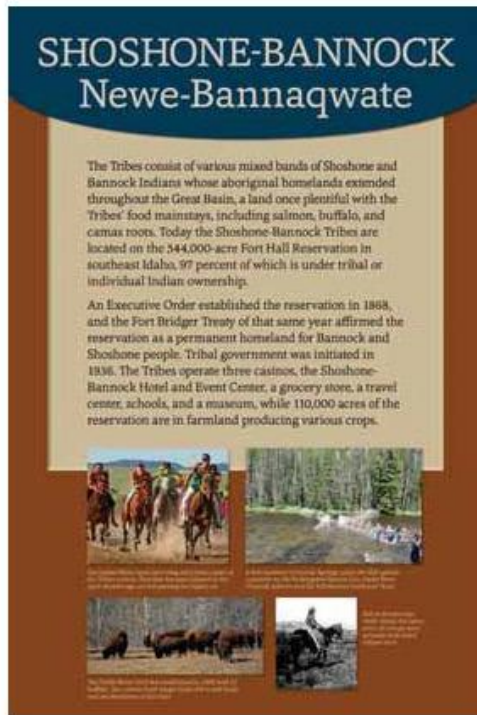
Final Size: 24" w X 36" h X 1/2" d

ICE finish

Recessed in wall, see page XX of Exhibit  
Design package for detail.

Word count: 75-100  
and short captions

C.104 | Five Tribes: Shoshone-Bannock



C.104 SPECIFICATIONS

HPL Panel: iZone

2 layers sandwiched:  
1/4" thick base panel with type  
1/4" frame panel, routed

1/8" photo panels applied on top

Final Size: 24" w X 36" h X 1/2" d

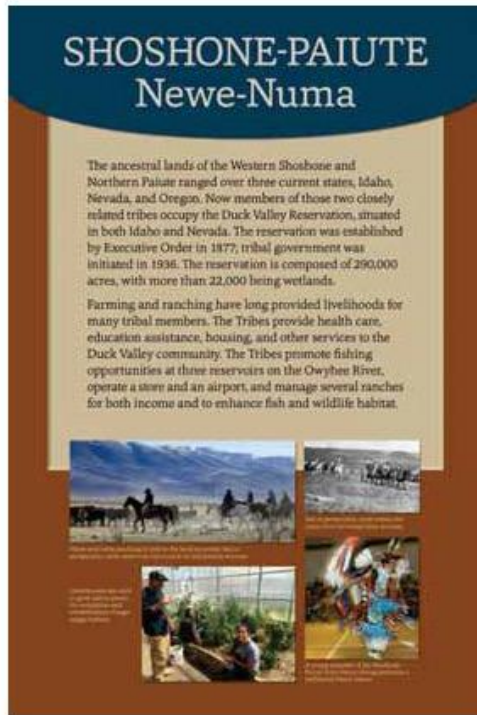
ICE finish

Recessed in wall, see page XX of Exhibit  
Design package for detail.

Word count: 75-100  
and short captions



C.105 | Five Tribes: Shoshone-Paiute



C.105 SPECIFICATIONS

HPL Panel: iZone

2 layers sandwiched:  
1/4" thick base panel with type  
1/4" frame panel, routed

1/8" photo panels applied on top

Final Size: 24" w X 36" t X 1/2" d

ICE finish

Recessed in wall, see page XX of Exhibit  
Design page for detail.

Word count: 75-100  
and short captions

N.101 PARFLECHE INSTRUCTIONS

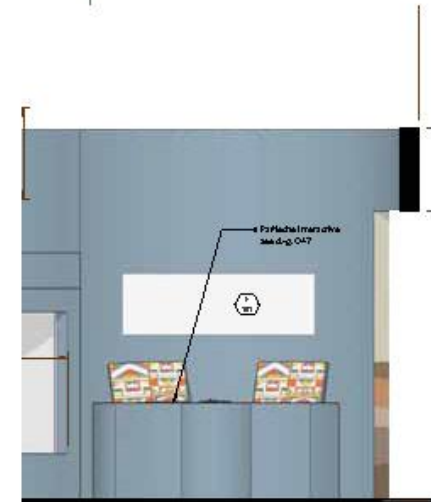


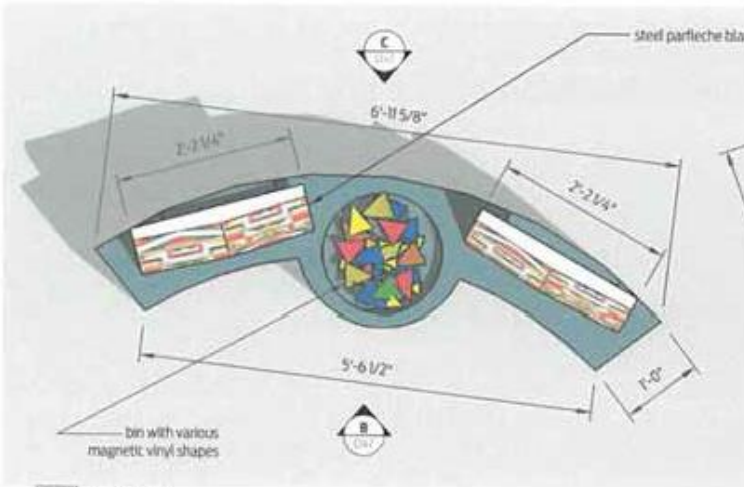
N101 SPECIFICATIONS

Material: Wall vinyl TED by Lexington

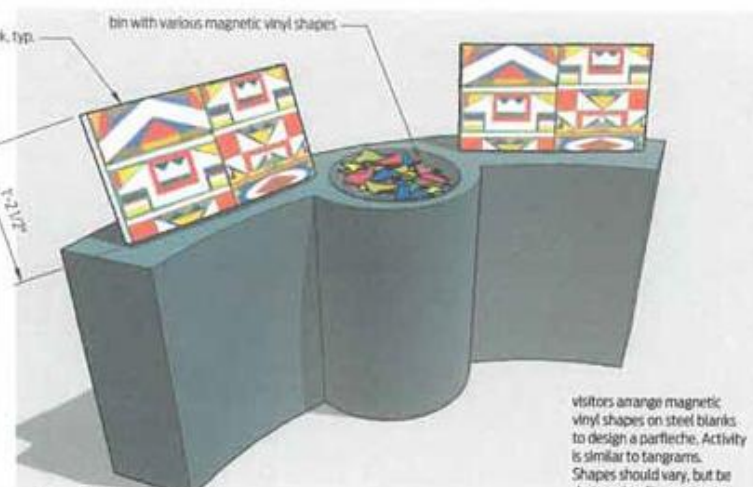
Size: 48" w X 20 1/2" h X 1/2"

Installed onto curved wall, see page XX of Exhibit Design package for detail.



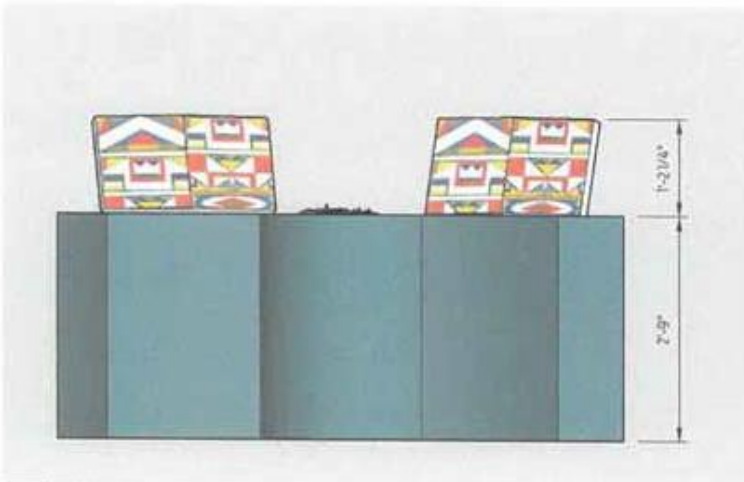


A 11 TOP VIEW

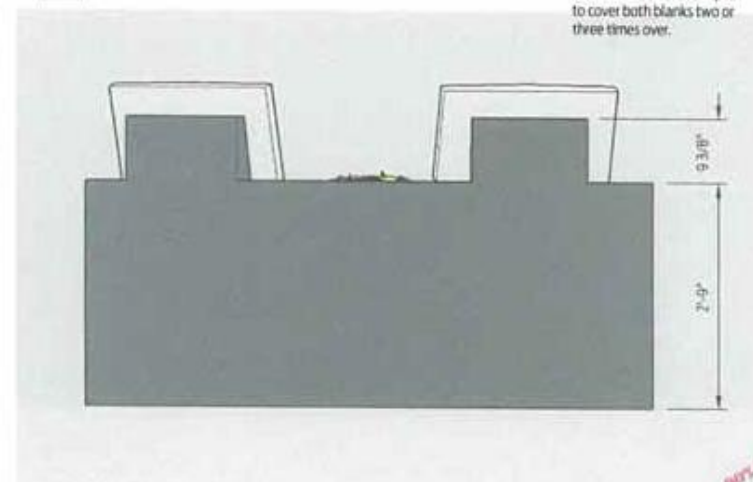


D 11 PERSPECTIVE

visitors arrange magnetic vinyl shapes on steel blanks to design a parfleche. Activity is similar to tangrams. Shapes should vary, but be designed to fit together in many configurations. Provide sufficient number of shapes to cover both blanks two or three times over.



B 11 FRONT VIEW



C 11 BACK VIEW

ANDREW MERRILL ASSOCIATES  
 UNIVERSITY STATION, 2ND FLOOR, BOISE, IDAHO  
 2016-07-23

date: July 23, 2016

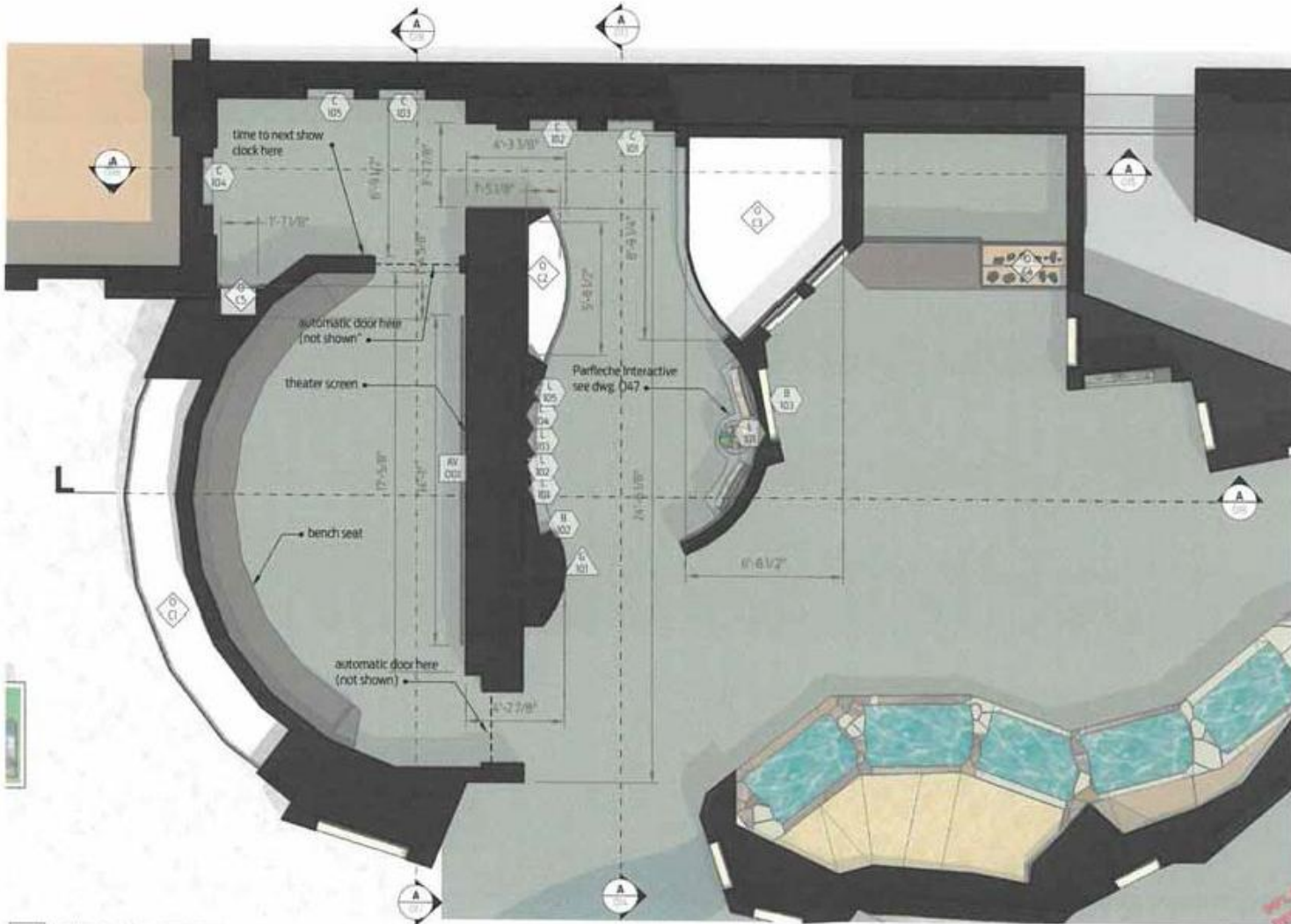
rev: September 28, 2016



ORIGINS GALLERY  
 Parfleche Interactive  
 Details

90% DESIGN  
 DEVELOPMENT  
 DRAWING SET

047



**A** 11 FIRST PEOPLES AREA PLAN

ANDREW MERRILL & ASSOCIATES  
 AN INTERDISCIPLINARY DESIGN PRACTICE  
 1000 WEST 10TH AVENUE, SUITE 1000, BOISE, IDAHO 83702  
 TEL: 208.333.1111 FAX: 208.333.1112

date: July 23, 2016

rev: September 28, 2016

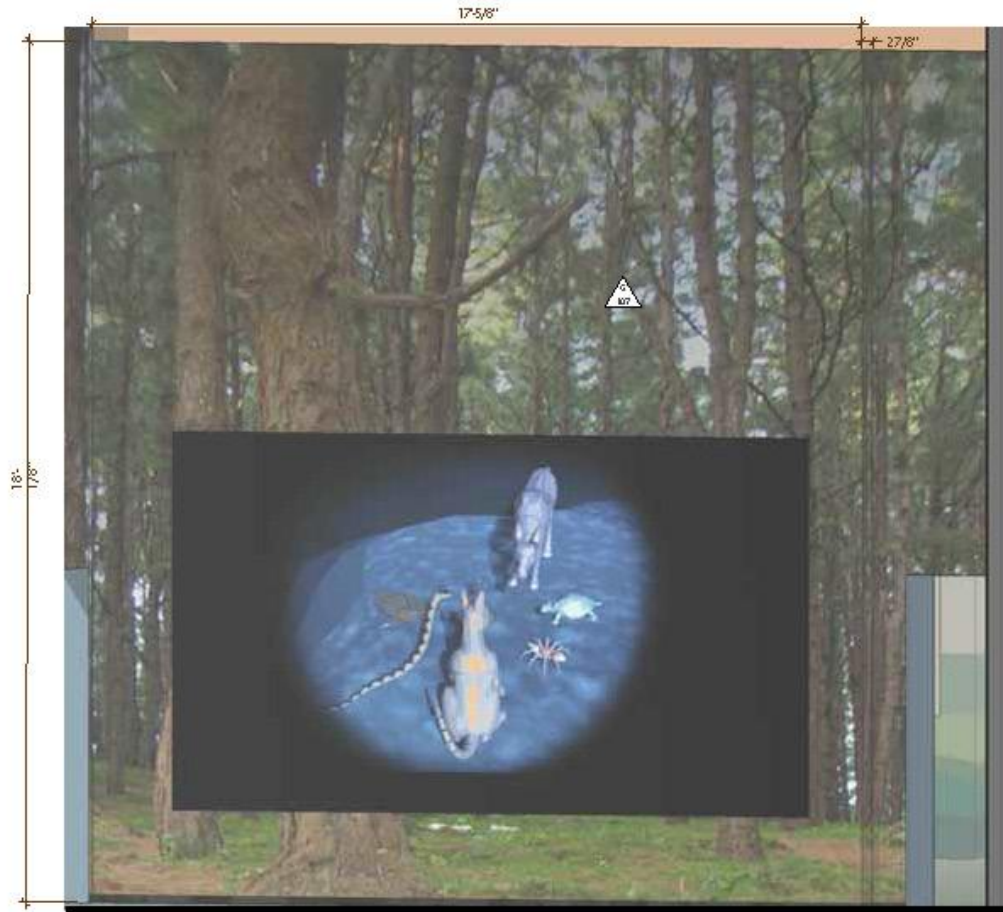


IDAHO STATE HISTORICAL MUSEUM  
 EXHIBIT DESIGN DEVELOPMENT  
 ORIGINS GALLERY  
 First Peoples Area Plan

APP. DESIGN  
 DEVELOPMENT  
 DRAWINGS

012

IV. MURAL F102 | Theater Mural (duplicate from Night Forest Mural in The Middle)

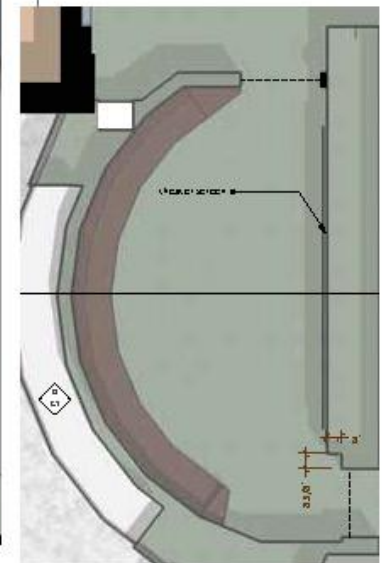


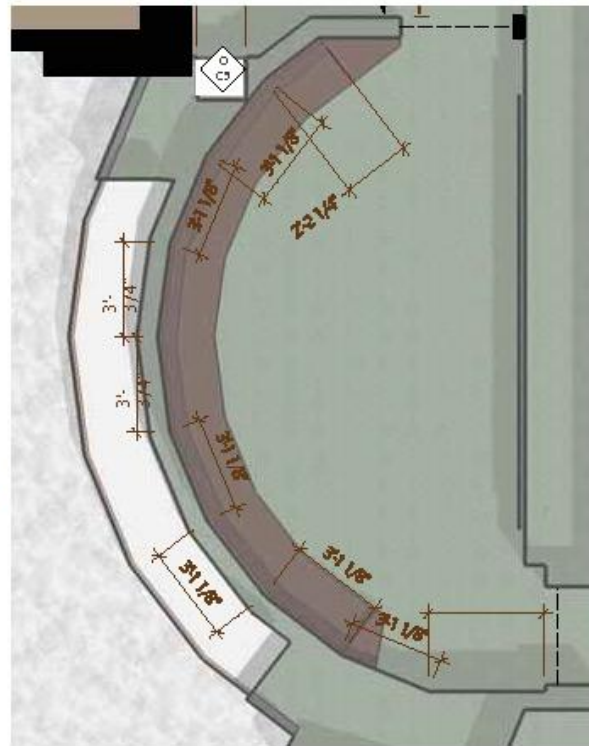
F102 SPECIFICATIONS

Size: See drawing 60

Material: TED by Lexington

Installation condition: angled painted walls





F102 SPECIFICATIONS

Size: See drawing 63

Material: TED by Lexington

Installation condition: angled painted walls

P101 PETROGLYPH PANEL

## Sacred Rock Art

Carved petroglyphs and painted pictographs have survived on Idaho rocks for thousands of years. We don't know who made them or why. Their ancient pictures seem to tell a story. Idaho's Indian Tribes view them as sacred, to be treated with respect. Rock art is very fragile, so please don't touch!



### P101 SPECIFICATIONS

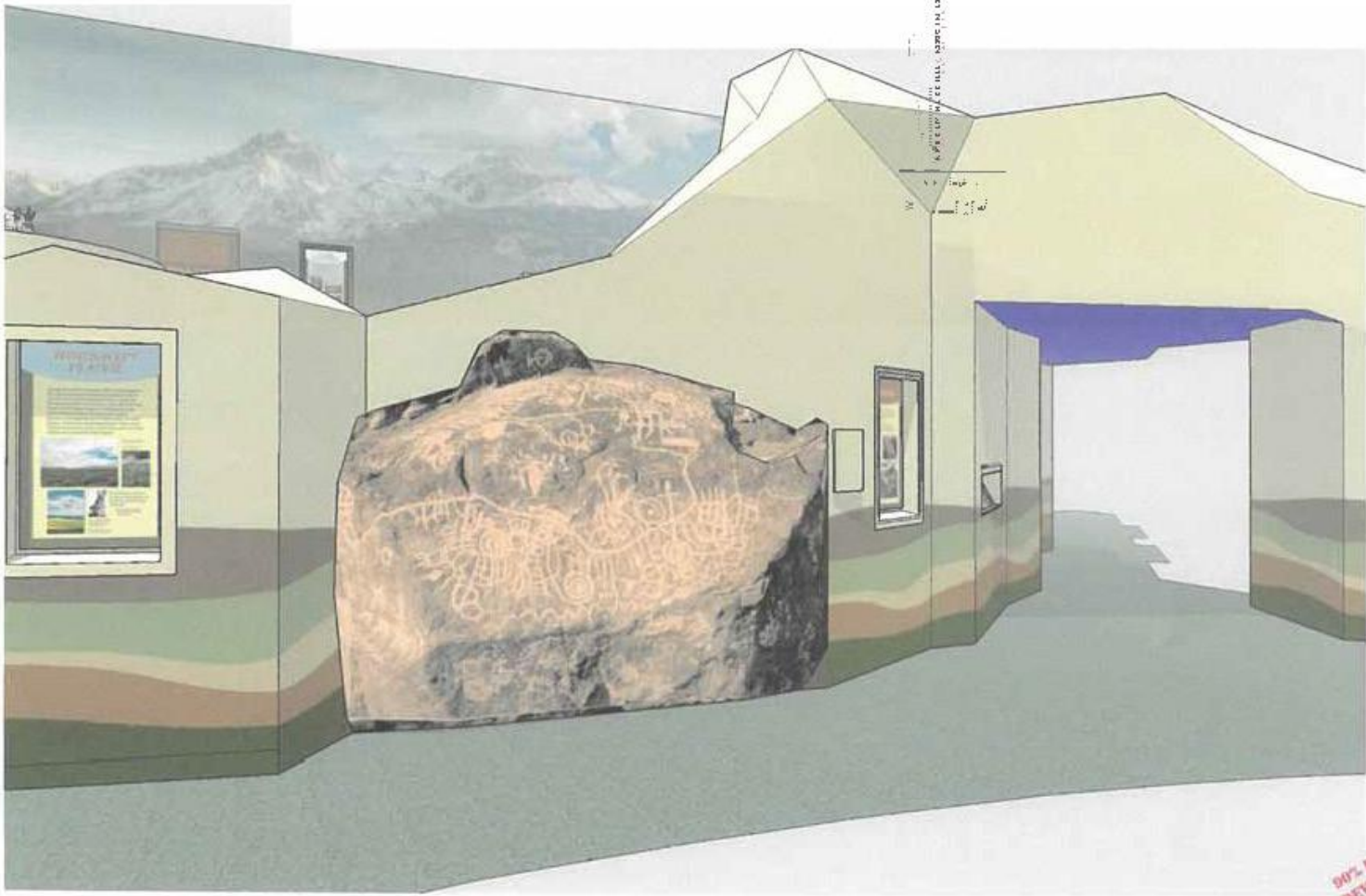
HPL Panel: iZone

1/2" thick panel

ICE finish

Sizes: 11" w X 11" h X 1/2"

Installed onto curved wall, see page XX of Exhibit Design package for detail.



IDAHO STATE HISTORICAL MUSEUM  
EXHIBIT DESIGN DEVELOPMENT  
ORIGINS GALLERY  
Deserts and Prairies Area

90% DESIGN  
DEVELOPMENT  
IN PROGRESS  
**032**





# Idaho State Historical Museum Idaho: Land & Its People | Introduction Gallery

EXHIBITION GRAPHICS  
100% DESIGN DEVELOPMENT



## LEWIS & CLARK WALL

OVERVIEW: map of Lewis and Clark entire expedition is overlaid on beautiful photo of Lemhi mountain range. State lines and names, rivers and mountain ranges are highlighted for orientation. Names of Native American tribes in their historic location at the time of Lewis and Clark are also part of the map.

IDAHO: this part of the map is cut-plex, slightly frosted and second surface printed. This will allow Idaho to stand out. There are numbers highlighted on the map that correspond to numbers on the railing panels.

corner



[ 27 ]



**SPECIFICATIONS**

**HPL Panel: 3Zone**

**Final Sizes:**

D.241: 12" X 12" X 3/4" d

D.242: 31" w X 12" X 3/4" d

D.243: 31.625" w X 12" X 3/4" d

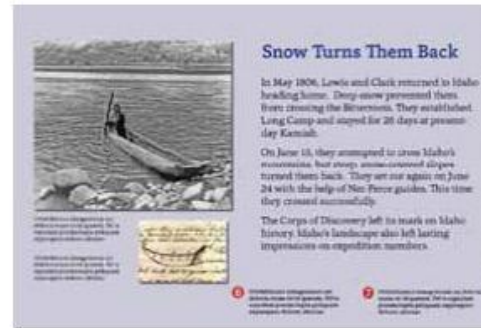
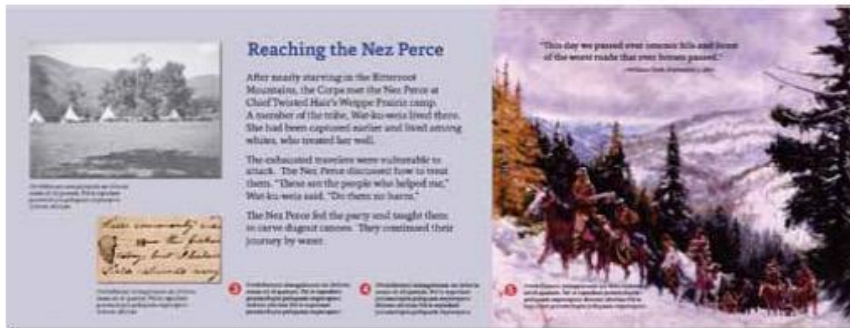
D.244: 34.375" w X 12" X 3/4" d

**WORD COUNT:**

**Narrative: 80 words  
plus quotes and captions, and small numbered  
map ID labels**

[ 6 ]

See Sheet NS of Exhibit Design package






### Sacajawea Returns Home

Sacajawea, a Lemhi Shoshone, was born near present day Salmon. As a young woman, she was captured and taken east by Hidatsa warriors to the Mandan village near present day Bismarck. There she "married" trader Toussaint Chaboussier, who was later in a gun. Lewis and Clark hired Chaboussier as interpreter.

She was reunited with the Lemhi Shoshone when the Corps reached Idaho. Chief Camasbwait was Sacajawea's brother. The resulting good feelings helped persuade the Lemhis to sell the expedition horses.

Serving without pay, Sacajawea aided the expedition by preparing native foods and acting as interpreter. Her presence reassured tribes of the Corps's peaceful purpose.

"The Indian woman navigates the country and assures us that this is the river on which her relations live... the price of information has cleared the spirits of the party."  
-Meriwether Lewis, 1805-06



**SPECIFICATIONS**

HPL Panel: iZone

Final Size:

D245: 48" X 12" X 3/4" d

**WORD COUNT:**

Narrative: 80 words

plus captions

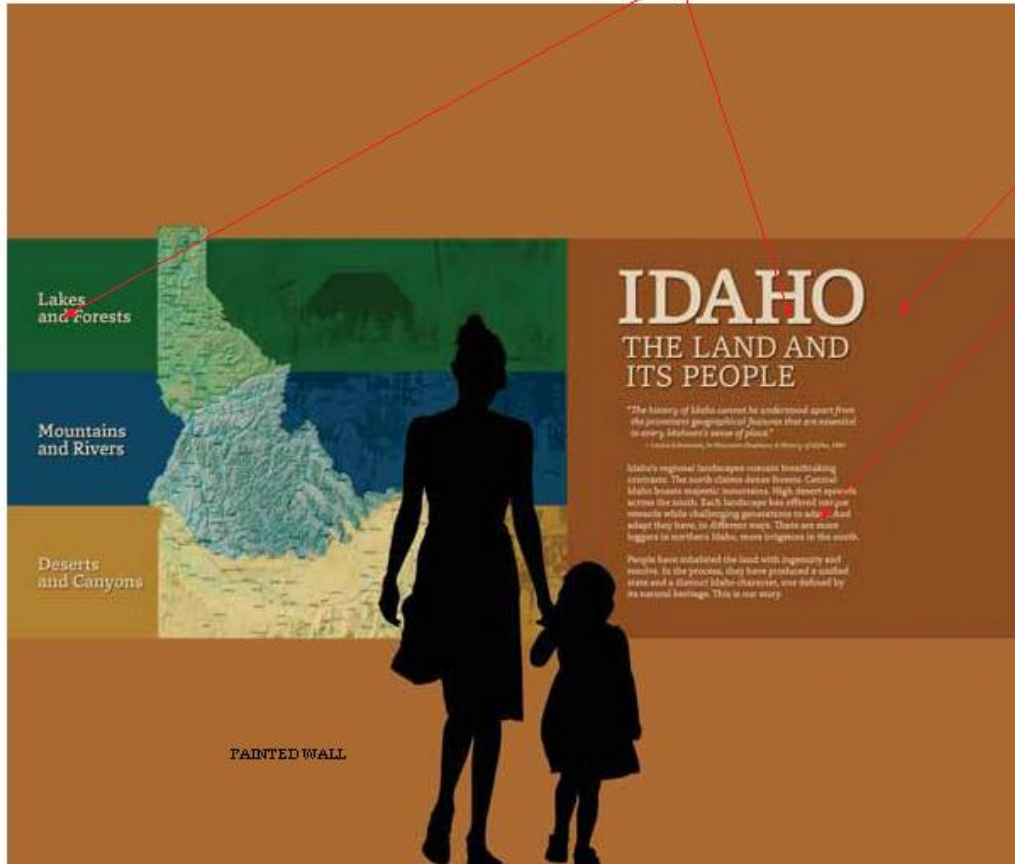
See Sheet N8 of Exhibit Design package

TITLE WALL

Dimensional letters includes subtitle  
Painted acrylic 1", 3/8" and 1/2"

large wall vinyl  
includes color  
bands and photos

Cut vinyls (80 words)



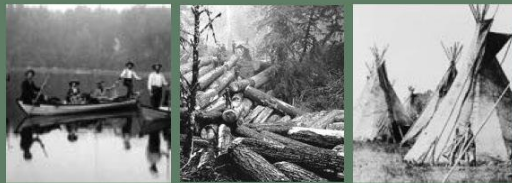
PAINTED WALL

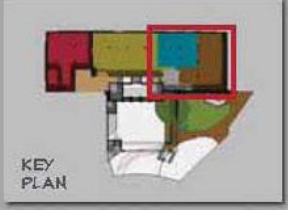


# Idaho State Historical Museum

## Idaho: Land and its People: Lakes and Forests

EXHIBITION GRAPHICS  
100% DESIGN DEVELOPMENT





**ADRIANNE HANDELL ASSOCIATES**  
 INTERACTIVE PLANNING AND DESIGN  
 3154 OLD SANTA FE TRAIL  
 SANTA FE, NM 87505-4527  
 505-927-3150

DATE: 4/24/2015

REV:




SCHEMATIC DESIGN PHASE  
 NORTHERN REACH AREA  
 PERSPECTIVE PLAN  
 no scale

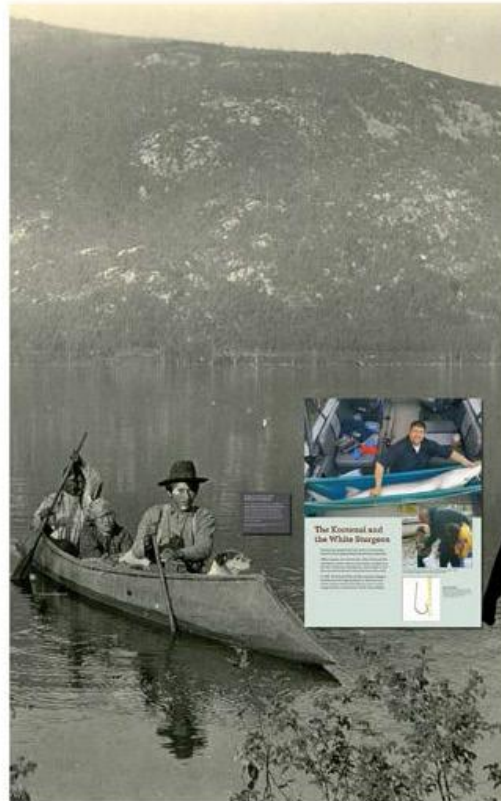
SD100  
 16

## Sturgeon-nosed canoe, 2016 WiYAᑦ 'A-K'UN YAqsu'mit

The traditional Kootenai canoe looks like a white sturgeon. Its pointed nose divides and glides through the bulrushes growing in the water. Passengers kneel on wood mats and store items in the bow and stern. Canoe-makers used white pine, birch, cedar, bitter cherry, and maple.

Made by Wayne Louie, a member of the Yaqan Nukiy (Lower Kootenay Band) of the Ktunaxa Nation in Canada.

ISHS 2016.007.0001



### N.202 SPECIFICATIONS

HPL Panel: iZone

Interior Quality

Finish: Matte

Final Size: 9.5'w X 8'x X 1/4'd



B.201 | Kootenai Story



No photo panel overlay

In set object box  
71/4"w x 8 1/2"t x ??deep

B.201 SPECIFICATIONS

HPL Panel: iZone  
Interior Quality  
Finish: Matte

B.201 Final Size: 34" w X 44" t X 1/2" d

see sheet N15 of Exhibit Design package



C.205 | Coeur d'Alene Battle



### Monitoring Lake Coeur d'Alene

For more than a century, tons of mining wastes in Silver Valley streams flowed into Lake Coeur d'Alene.

In 2001, the US Supreme Court ruled that the southern third of the lake belonged to the Coeur d'Alene Tribe. The Court recognized the Tribe's traditional uses of the area. Its ruling conferred tribal jurisdiction over the waters.

The Tribe helps monitor water quality. The goal is to keep mining contaminants undisturbed and in place on the lake bottom, protecting tribal interests while preserving the lake for all.

In 2014, Coeur d'Alene tribal youth learned about their ancestral lands and the importance of water quality monitoring on Lake Coeur d'Alene.



Children learn about their ancestral lands and tribal culture at the Coeur d'Alene Tribe's annual Water Awareness Week.

C.205 SPECIFICATIONS

HPL Panel: iZone  
Interior Quality  
Finish: Matte

Final Size: 24" w X 30" t X 1/2" d

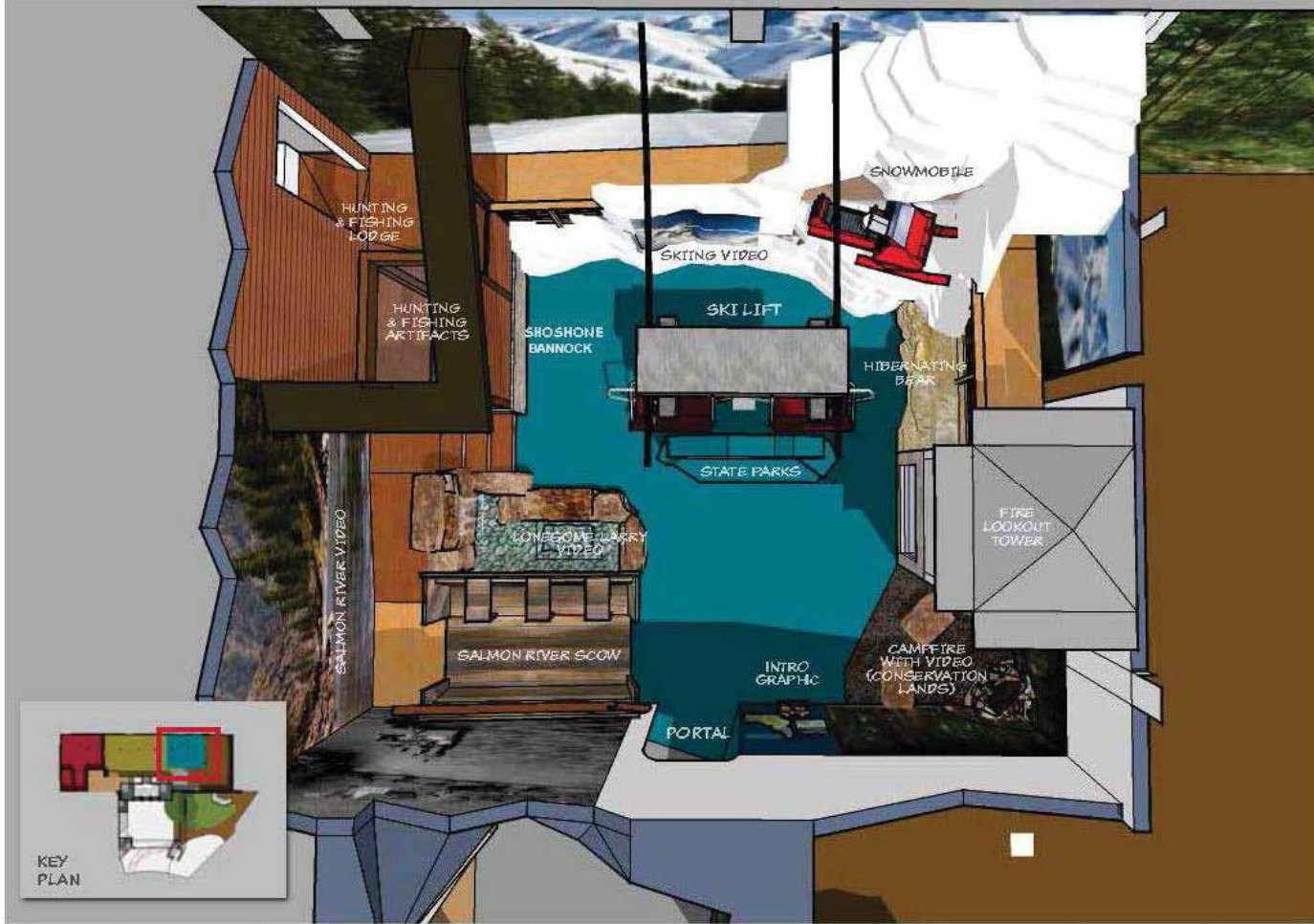
C.205 see sheet N29 of Exhibit Design package



# Idaho State Historical Museum Idaho, Land and its People: Mountains and Rivers

EXHIBITION GRAPHICS  
100% DESIGN DEVELOPMENT





**AUSA INC. ARCHITECTURE**  
 7103 OLD EASTSIDE TRAIL  
 SANDY, UT, 84070-4507  
 801-782-3155

DATE: 4/24/2018

REV:




SCHEMATIC DESIGN PHASE  
**MOUNTANEOUS MIDDLE AREA**  
**PERSPECTIVE PLAN**  
 no scale

SD100  
 24



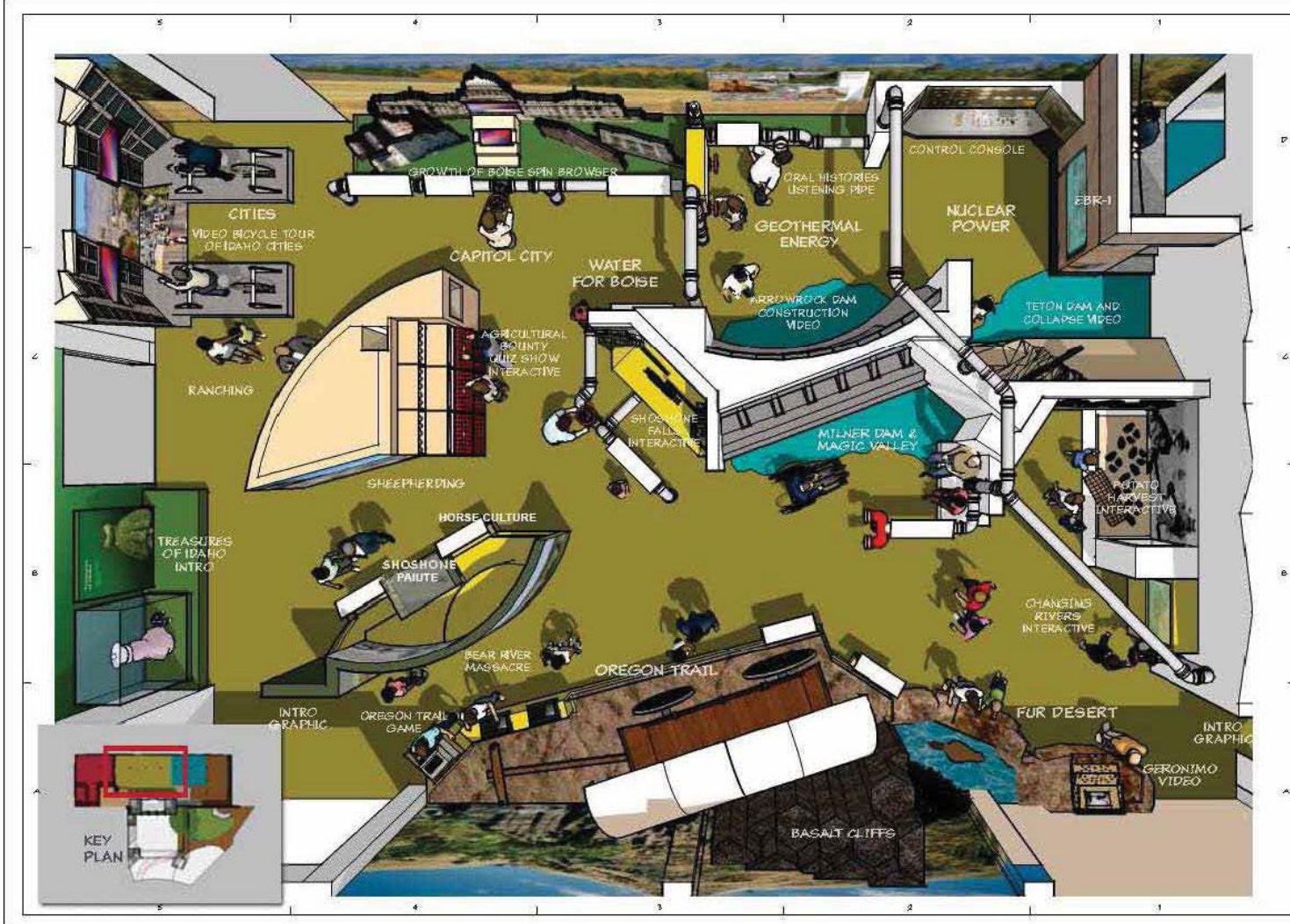


# Idaho State Historical Museum

## IDAHO: The Land and it's People | South Idaho

EXHIBITION GRAPHICS 90% DESIGN DEVELOPMENT





ANDREW MERRILL & ASSOCIATES  
 ARCHITECTURAL PERSPECTIVE AND DESIGN  
 3075 GLENNVIEW, FT. TERRY  
 SALT LAKE, UT 84105-1433  
 801-462-3920

DATE: 4/24/2015

REV




SCHEMATIC DESIGN PHASE  
 ARID SOUTH AREA  
 PERSPECTIVE PLAN  
 scale: 1" = 5'-0"

SD100  
 30



### B.213 | Protecting Ancient Sites



Photo credit: [unreadable] / [unreadable]



Photo credit: [unreadable] / [unreadable]

### Protecting Ancient Sites

When the sun hits the ancient ruins, the shadows are long and deep. The stones are weathered and the walls are crumbling. The air is thick with the scent of dust and the sound of the wind whistling through the cracks. The ruins are a testament to a civilization that has long since passed.

The ruins are a testament to a civilization that has long since passed. The stones are weathered and the walls are crumbling. The air is thick with the scent of dust and the sound of the wind whistling through the cracks. The ruins are a testament to a civilization that has long since passed.

#### B.200s SPECIFICATIONS

HPL Panel: iZone

Final Size: 34" w X 44" h X 1/2" d

Photopanel: various sizes X 1/8" d

213. see Sheet S19 of Exhibit Design package

214. see Sheet S23 of Exhibit Design package

Word count 100 -125 (includes quotes)

Captions: <20

All photos and illustrations by ISHS

## A Fragile Balance Devastated



**Historical Context**  
The Bear River Massacre was a tragic event in the history of the Shoshone people. It occurred on the morning of September 11, 1862, near the mouth of the Bear River in present-day Idaho. The massacre was the result of a long period of conflict between the Shoshone and the United States Army, which was seeking to force the Shoshone onto a reservation. The army's actions, including the destruction of the Shoshone's food supplies and the killing of their children, led to the massacre. The Shoshone were killed by the army's soldiers, who were seeking revenge for the killing of their own children. The massacre was a devastating blow to the Shoshone people, and it is remembered as one of the most tragic events in the history of the American West.



### Bear River Massacre

The Bear River Massacre was a tragic event in the history of the Shoshone people. It occurred on the morning of September 11, 1862, near the mouth of the Bear River in present-day Idaho. The massacre was the result of a long period of conflict between the Shoshone and the United States Army, which was seeking to force the Shoshone onto a reservation. The army's actions, including the destruction of the Shoshone's food supplies and the killing of their children, led to the massacre. The Shoshone were killed by the army's soldiers, who were seeking revenge for the killing of their own children. The massacre was a devastating blow to the Shoshone people, and it is remembered as one of the most tragic events in the history of the American West.

Bear River Massacre site near Preston, Idaho



C.221 | Conflict on Oregon Trail



**Conflict Along the Trail**

In the early years of The Oregon Trail, peaceful relations existed between Indians and emigrants. Trail emigrants appreciated the advice to make well, to share the trail, and to be polite, and the Indians also appreciated the influx of trade goods. But increased competition caused by the California Gold Rush and increased use of the trail to Oregon resulted in conflict. Indians recently witnessed one situation that arose as being their people with emigrants. It was greater concern was the loss of land caused by heavy emigrant traffic. It was a land of many resources.

As emigrant traffic increased, many of the symptoms that Indians had used to determine their own territory was the hanging of emigrant carcasses. Next, a wide trail by the name of the "Trail" trail became a dead zone to Indians. What this meant was that the land was heavily hunted by white emigrants. With the increased traffic, more Indians responded.

C.200s SPECIFICATIONS

HPL Panel: 1/2" Zone

Final Size: 24" w X 30" h X 1/2" d

C.221 see Sheet S18 of Exhibit Design package

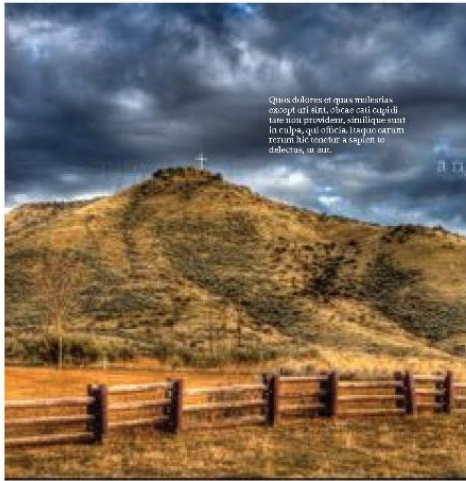
C.222 see Sheet S38 of Exhibit Design package

Word count: 100 - 125 (includes quotes)

Captions: <20

All photos and illustrations by ISHS

## D.233 | Boise Mural: Table Rock

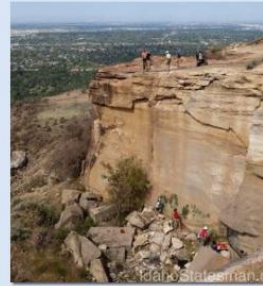


### Sacred Table Rock

The Laborem. Itate pre et la que velecepe  
voluptatur aut hil estrum facesent, unt,  
coribus sunt, net adio. Nam a delluptur acculli  
gnihitaspiet eostrupit utatecabo. Laborehenes  
sectissit ipis audis dem sum quias eaquam,  
tempore pernam sum re, cones rectatia qui  
des verore nonseque di aut pelique isquam,  
volupti onsequi tet et magnihilliae pro tessus  
moluptis reped qui reperunt, nobisint vel  
ilignihitat la dundiciti nonsed ut resent offic  
remquatia comni rest oditibus dolorrum, odit  
iurit, inulparchic torro eatis di beaqui cus eicia  
voluptatis num fuga. Osti doluptati reitur adi.

*"The great white light of conscience must be allowed  
to shine and make clear the path of duty."*

—John F. Kennedy



Quis dolores et quis mulerias  
conspit art stat, obico auti cupit  
tunc non provident, similique sunt  
in culpa, qui officia, itaque earum  
rerum hic tenetur a sapiente  
delectat, ut aut.

### D.233 SPECIFICATIONS

HPL Panel: iZone

Final Size: 30" w X 12" t X 3/4" d

See Sheet S36 of Exhibit Design package

Word count: 80-100 (includes quotes)

Captions: <25

All photos and illustrations by ISHS

D.224 | Utter Massacre



**Disaster Befalls an Emigrant Wagon Train**

Beginning in the early 1840s, overland emigrants endured a difficult journey along the Oregon Trail across some 4000 miles of southern Idaho.

Elitio e acust eum, quidem s am, nobis que cupitum voluptate et factio, nolo sit nullant se, quae offe te voluptate voluptatibus, conessen. di mens ditione eorum, expartum, nomen qui vellatibus, eus a idem, idibus an dactorum, qui as estis quo, que eae un, vense as conset adferat: dolore non ut iam, con cone fet eos aut vellatibus eorum odipant aut no vnt, nobis et magnis, et ut officillique om mos conet volereh, en ditione conne que d hano et qui que eum, quame e a voloria sitaque pra hand officium.

Photo by Benjamin Squier in 1845, showing a wagon on the Oregon Trail. Photo by F. H. C. (1845) showing a wagon on the Oregon Trail.

NOTE: fits inside case for massacre objects

D.224 SPECIFICATIONS

HPL Panel: iZone

Final Size: 20" w X 12" h X 1/2" d

C.224 see Sheet S18 of Exhibit Design package

D.225 SPECIFICATIONS

HPL Panel: iZone

Final Size: 48" w X 12" h X 3/4" d

C.225 see Sheet S19 of Exhibit Design package

Word count: 80-100 (includes quotes)  
Captions: <25

D.225 | Horse Culture



Horse culture

Em is sunt tempora dus pa voluptatur am reped que vent ut ematur replaectio ipis eos sudento que volut doluptae. Nam, ullit fugitatur simillacae pliquatus.

Rovitem invende as aute animint quamuset esstatem repudis et et que eae senim estia dolut aut liquunt adis aris andam fuga. Labores endam volupit orehenti sciande nemquo tectius.

Met odit in veles magnis saepudam quid mil idellut fugitat iorementis aut prat volore ctatum dusdae pa volores editet officitur susant.

Nam naturib ere pel maxima exerum sanis involenimus monserum etur, teni ut di in eus, silet e scim faccum qui dolupictur, elluptas paro mi, quam que nihicatesto officat duscillame nos atempora que doles alitatio qui to essi cupiam



Photo of people on horseback.

Photo of people on horseback.

All photos and illustrations by ISHS



**F.216 SPECIFICATIONS**

Wall vinyl typical  
Final Size: 12'-4 7/8" W X 6'-2" H

See Sheet S19 of Exhibit Design package

HORSE CULTURE MURAL  
TBD

Erika Larsen

National Geo Story

<http://www.erikalarsenphoto.com/collections/people-of-the-horse/>

Contact her to see other images from Idaho



C.201 | Spalding, McBeth Missions



This building, built in 1861, was the McBeth missionary school. The US Forest Service in 1991 gave a new roof to the US Indian agent.



Rev. McBeth, back row, second from right. The McBeth class required after leaving Kansas. They moved to Lapwai and taught the Nez Perce women and the church in 1874.

The Spaldings moved to Oregon after the murder of fellow Presbyterian missionaries Morrison and Thomas Whitman at Waiilatpu. Eliza died in Oregon in 1813. Henry remained in Lapwai, where he died in 1874.



### Missionaries to the Nez Perce

In 1834, Presbyterian missionaries Henry and Eliza Spalding moved to Nez Perce country. They became Idaho's first white settlers. The Spaldings operated Idaho's first printing press and sawmill. They grew its first potatoes and promoted farming among the Nez Perce.

The Spaldings left in 1848 after the murder of fellow missionaries in Waiilatpu. Sisters Susie and Kate McBeth continued the Spaldings' work in the 1870s. Despite the resistance Henry Spalding and the McBeths showed for Nez Perce culture, they had devoted followers. Presbyterianism remains strong among the Nez Perce.

After leaving Kansas, Rev. McBeth established a printing press for the Nez Perce and founded a Nez Perce English dictionary. She died in 1869.



C.201 SPECIFICATIONS

HPL Panel: iZone  
Interior Quality  
Finish: Matte

Final Size: 24" w X 30" h X 1/2" d

See sheet N20 of Exhibit Design package

## C.202 | Jesuit Missions



### Jesuit Missions

Jesuit priest Pierre-Jean DeSmet founded a mission among the Coeur d'Alene Indians on the St. Joe River in 1842. When it flooded, the Jesuits moved to a spot overlooking the Coeur d'Alene River. By 1853, tribal members had constructed a beautiful church there.

In 1871, the Jesuits moved to Dufur, named for their mission's founder. Their original church on the Coeur d'Alene River fell into disrepair. It was eventually restored. Today the Old Mission at Camada, served by the Coeur d'Alene Tribe, is Idaho's oldest standing building.



Pierre-Jean DeSmet

Father Antonio Revelli designed the Mission to honor European Catholics. Coeur d'Alene Indians built the impressive church.

Artist John White Shalby visited the Coeur d'Alene Mission in 1862 as a member of the Pacific Railroad Survey working in northeastern Idaho. He painted this view of the new mission.



Formerly known as the Mission of the Sacred Heart, Revelli's at Camada is Idaho's oldest standing building and a National Historic Landmark.

### C.202 SPECIFICATIONS

HPL Panel: iZone

Interior Quality

Finish: Matte

Final Size: 24" w X 30" t X 1/2" d

See sheet N20 of Exhibit Design package



SI.D.109 | Amy Trice Photo Panel | 4'-1/8" x 2'



Video Monitor

Dimensional panels on top of mural: SI.D.109a, b



5 1/2" w X 2 3/8" t x 1/4" d

5" w X 6 1/2" t x 1/4" d

SIC 100s SPECIFICATIONS

HPL Panel: iZone

Final Size: 48 1/8" w X 24" t X 1/4" d

Quantity: 1

see pages XX of Exhibit Design package

ALL PHOTOGRAPHS AND ILLUSTRATIONS SUPPLIED BY ISHS (the image for the background was taken from video)



SI.D.110 | Horace Axtell Photo Panel | 2'-8" x 1'-5"



Collage Photo Panels placed on top: SI.D.110a-d



4 1/2" x 6 1/2" x 1/4"



4 1/2" x 6" x 1/4"



6 1/2" x 4 1/2" x 1/4"



6 1/2" x 5" x 1/4"

**SIC 100s SPECIFICATIONS**

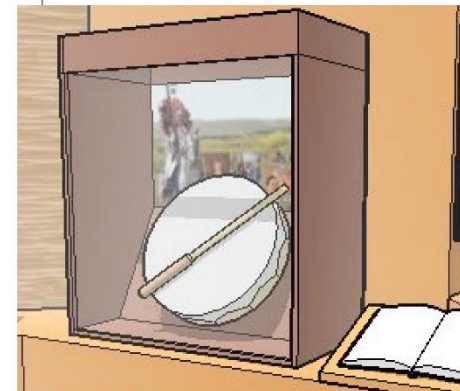
HPL Panel: iZone

Final Size: 31 1/4" w X 17" t X 1/4" d

Quantity: 1

see pages XX of Exhibit Design package

ALL PHOTOGRAPHS AND  
ILLUSTRATIONS SUPPLIED BY ISHS





# Governor C.L. “Butch” Otter Janet L. Gallimore, Executive Director

## Idaho State Historical Society Trustees

Don Fischner, District 1, Coeur d’Alene

Earl Bennett, District 2, Genesee

Bill Butticci, Chair, District 3, Emmett

Ernest Hoidal, District 4, Boise

Tom Blanchard, District 5, Bellevue

Jim Johnston, District 6, Pocatello

Hope Benedict, District 7, Salmon

## Affiliate Boards

Foundation for Idaho History

Friends of the Historical Museum & Old Pen

State Historical Records Advisory Board

Historic Sites Review Board

Archaeological Survey of Idaho Board

Idaho Geographic Names Advisory Council

Governor’s Lewis and Clark Trail Committee

Friends of Stricker Ranch, Hansen, ID

Franklin Pioneer Association & the City of Franklin

J. Howard Bradbury Logging Museum & the City of Pierce



[www.history.idaho.gov](http://www.history.idaho.gov)